

Industrial luminaire for LED light sources.

TECHNICAL DATA

Mounting: surface mounted, in the ceiling, with mounting frame (sold separately), suspended, on chains (on request), for hanging on a cable, with special mounting bracket (on request)

Body: high pressure die-cast aluminum

Colour: gray

Diffuser: tempered glass

ELECTRICAL DATA

Power supply efficiency: >95%

Power: 220-240V 50/60Hz

Includes light source: yes

Type of equipment: ED, DALI

Electrical connection: max 3x2,5 mm² wire, max 5x2,5 mm² wire

OPTICAL DATA

Light distribution: rotationally-symmetric

Way of lighting: direct

Reflector: white

GENERAL DATA

Lifetime (L80B10): 100 000 h

Lifetime (L90B10): 50 000 h

Additional information: Ball impact resistance. The possibility of using one or more power supplies in the luminaire.

Other remarks: Beam angle: 100°

Warranty: 3 years

Application: warehouses, logistics centers, industrial facilities, sport facilities, roofing



Code	Replacement of conventional technology [W]	Type of equipment	Luminaire power [W]	Lumen luminaire [lm]	Efficacy [lm/W]	Colour temperature [K]	CRI/ Ra	Operating temperature range [°C]
Type: High Efficacy for internal mounting								
300092.00185	150W MH (180W)	ED	88	13650	155	4000	≥80	-15 ... +45
300092.00186	250W MH (300W)	ED	128	19550	153	4000	≥80	-25 ... +45
300092.00187	250W MH (300W)	ED	158	23650	150	4000	≥80	-25 ... +45
300092.00188	150W MH (180W)	DALI	86	13650	159	4000	≥80	-15 ... +45
300092.00189	250W MH (300W)	DALI	125	19550	156	4000	≥80	-25 ... +45
300092.00190	250W MH (300W)	DALI	155	23650	153	4000	≥80	-25 ... +45
300092.00177	150W MH (180W)	ED	88	14400	164	4000	≥70	-15 ... +45
300092.00178	250W MH (300W)	ED	128	20800	162	4000	≥70	-25 ... +45
300092.00179	250W MH (300W)	ED	158	25200	159	4000	≥70	-25 ... +45
300092.00180	150W MH (180W)	DALI	86	14400	167	4000	≥70	-15 ... +45
300092.00181	250W MH (300W)	DALI	125	20800	166	4000	≥70	-25 ... +45
300092.00182	250W MH (300W)	DALI	155	25200	163	4000	≥70	-25 ... +45
Type: Standard luminaire for internal mounting								
300092.00067	150W MH (180W)	ED	108	15450	143	4000	≥80	-40 ... +40
300092.00052	250W MH (300W)	ED	158	22300	141	4000	≥80	-40 ... +40
300092.00051	250W MH (300W)	ED	184	26700	145	4000	≥80	-40 ... +45
300092.00091	150W MH (180W)	DALI	105	15450	147	4000	≥80	-40 ... +55
300092.00092	250W MH (300W)	DALI	152	22300	147	4000	≥80	-40 ... +45
300092.00093	250W MH (300W)	DALI	193	26700	138	4000	≥80	-40 ... +40
Type: Luminaires for outdoor installation without roof								
300092.00117	150W MH (180W)	ED	108	15450	143	4000	≥80	-40 ... +40
300092.00118	250W MH (300W)	ED	158	22300	141	4000	≥80	-40 ... +40
300092.00119	250W MH (300W)	ED	184	26700	145	4000	≥80	-40 ... +45
300092.00120	150W MH (180W)	DALI	105	15450	147	4000	≥80	-40 ... +55

Luminous flux tolerance +/- 10%.

Power tolerance +/- 5%.

Lighting beam, light intensity distribution and light efficiency were examined in accordance with the EN ISO 17025:2005 norm for EN13032 norm series and the LM-79 norm.

Manufacturer does not provide suspension components.

Up-to-date product info and General Warranty Terms available on our website www.luglightfactory.com

Detailed information on luminous fluxes and powers for individual indexes are indicated on the product data sheet.

The parameters in the data sheet are given for Ta=25°C.

Code	Replacement of conventional technology [W]	Type of equipment	Luminaire power [W]	Lumen luminaire [lm]	Efficacy [lm/W]	Colour temperature [K]	CRI/ Ra	Operating temperature range [°C]
Type: Luminaires for outdoor installation without roof								
300092.00121	250W MH (300W)	DALI	152	22300	147	4000	≥80	-40 ... +45
300092.00122	250W MH (300W)	DALI	193	26700	138	4000	≥80	-40 ... +40

Code	Dimensions [mm] L W H	Mounting dimensions [mm] L	Pallet quantity	Quantity in package	Net weight [kg]
------	--------------------------	-------------------------------	-----------------	---------------------	-----------------

Type: High Efficacy for internal mounting

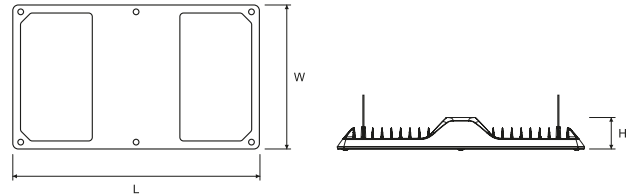
300092.00185	515 345 90	430	40	1	6.5
300092.00186	515 345 90	430	40	1	6.5
300092.00187	515 345 90	430	40	1	6.5
300092.00188	515 345 90	430	40	1	6.5
300092.00189	515 345 90	430	40	1	6.5
300092.00190	515 345 90	430	40	1	6.5
300092.00177	515 345 90	430	40	1	6.5
300092.00178	515 345 90	430	40	1	6.5
300092.00179	515 345 90	430	40	1	6.5
300092.00180	515 345 90	430	40	1	6.5
300092.00181	515 345 90	430	40	1	6.5
300092.00182	515 345 90	430	40	1	6.5

Type: Standard luminaire for internal mounting

300092.00067	515 345 90	430	40	1	6.5
300092.00052	515 345 90	430	40	1	6.5
300092.00051	515 345 90	430	40	1	6.5
300092.00091	515 345 90	430	40	1	6.5
300092.00092	515 345 90	430	40	1	6.5
300092.00093	515 345 90	430	40	1	6.5

Type: Luminaires for outdoor installation without roof

300092.00117	515 345 90	430	40	1	6.5
300092.00118	515 345 90	430	40	1	6.5
300092.00119	515 345 90	430	40	1	6.5
300092.00120	515 345 90	430	40	1	6.5
300092.00121	515 345 90	430	40	1	6.5
300092.00122	515 345 90	430	40	1	6.5



Luminous flux tolerance +/- 10%.

Power tolerance +/- 5%.

Lighting beam, light intensity distribution and light efficiency were examined in accordance with the EN ISO 17025:2005 norm for EN13032 norm series and the LM-79 norm.

Manufacturer does not provide suspension components.

Up-to-date product info and General Warranty Terms available on our website www.luglightfactory.com

Detailed information on luminous fluxes and powers for individual indexes are indicated on the product data sheet.

The parameters in the data sheet are given for Ta=25°C.

OTHER PICTURES

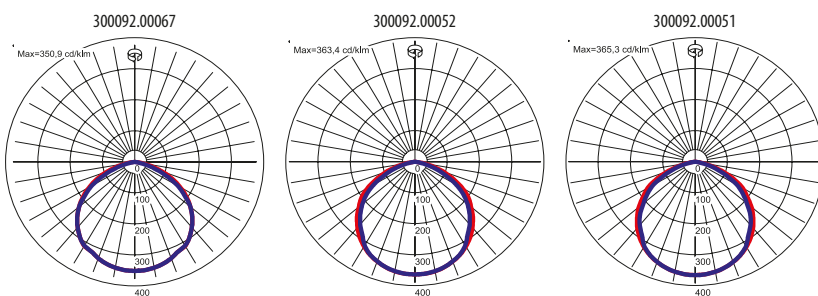


Luminaire suspended on a cable with a special mounting bracket - top view

ACCESSORIES

	150020.00821	Adjustable mounting bracket, 60x545x226		150010.00973	Suspended frame for connecting two CRUISER 2 LED or CRUISER 2 LB LED luminaires, 384x519x42
	150020.00957	Adjustable mounting bracket for mounting without roof, 60x545x226		150020.00824	Bracket for surface mounting, 89x205x187 (x2)
	150020.00956	Bracket for surface mounting without roof, 89x205x187 (x2)		150020.00990	Mounting bracket for hanging CRUISER 2 LED/CRUISER 2 LB LED luminaires on a cable, 343x512x292
	150021.00917	Frame for recessed mounting, 457x627x109			
	150021.00941	Frame for recessed mounting without roof, 457x627x109			

LIGHT BEAM CURVES



WAY OF LIGHTING

300092.00067

300092.00052

300092.00051

Luminous flux tolerance +/- 10%.

Power tolerance +/- 5%.

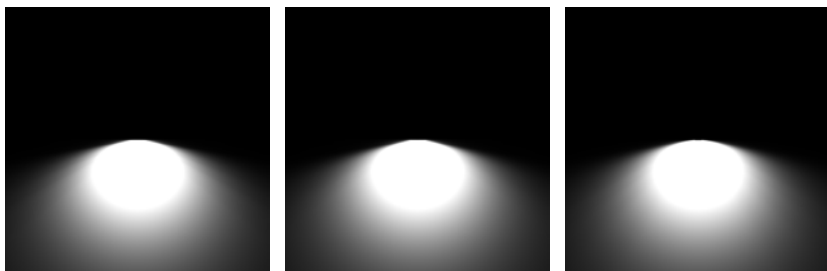
Lighting beam, light intensity distribution and light efficiency were examined in accordance with the EN ISO 17025:2005 norm for EN13032 norm series and the LM-79 norm.

Manufacturer does not provide suspension components.

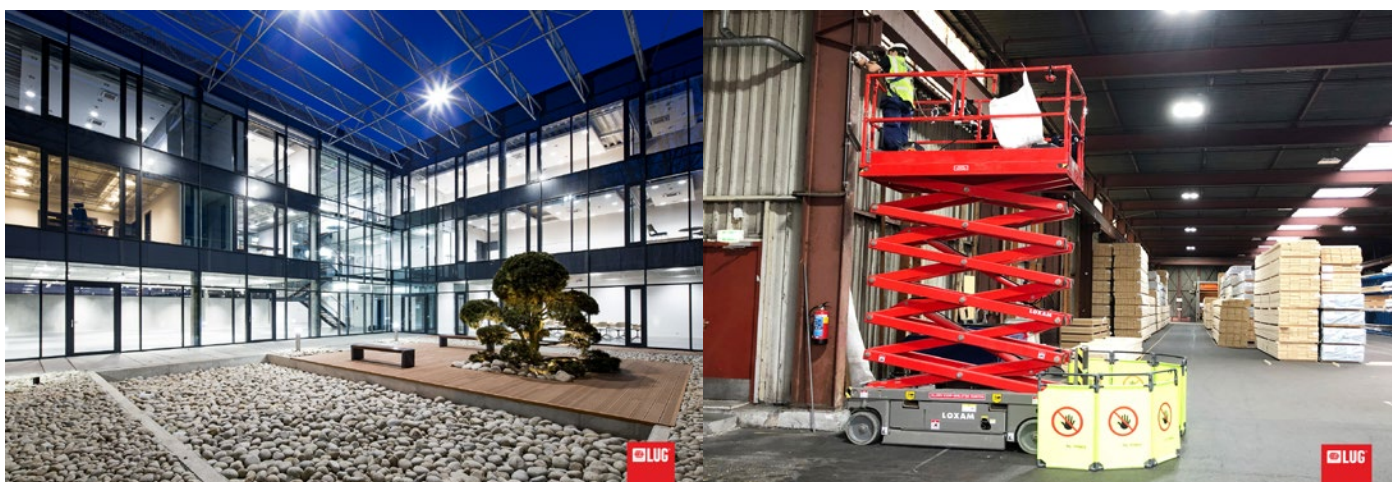
Up-to-date product info and General Warranty Terms available on our website www.luglightfactory.com

Detailed information on luminous fluxes and powers for individual indexes are indicated on the product data sheet.

The parameters in the data sheet are given for Ta=25°C.



OTHER PROJECTS



Puccini, Szczecin, Poland

Houtgroep van Drimmelen te Zwijndrecht, The Netherlands

Luminous flux tolerance +/- 10%.

Power tolerance +/- 5%.

Lighting beam, light intensity distribution and light efficiency were examined in accordance with the EN ISO 17025:2005 norm for EN13032 norm series and the LM-79 norm.

Manufacturer does not provide suspension components.

Up-to-date product info and General Warranty Terms available on our website www.luglightfactory.com

Detailed information on luminous fluxes and powers for individual indexes are indicated on the product data sheet.

The parameters in the data sheet are given for Ta=25°C.